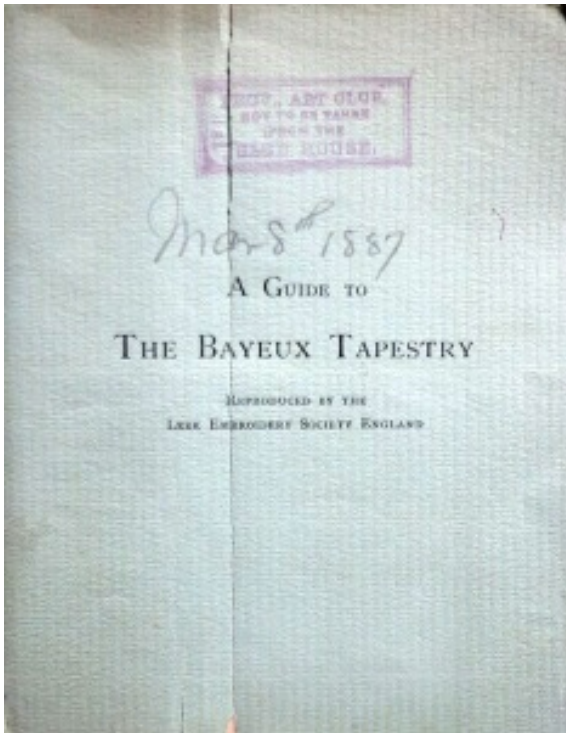


1887, 3/8, Fac-Simile of Bayeux Tapestry

Box 2, 1880-1889



1887, 3/8, Fac-Simile of Bayeux Tapestry

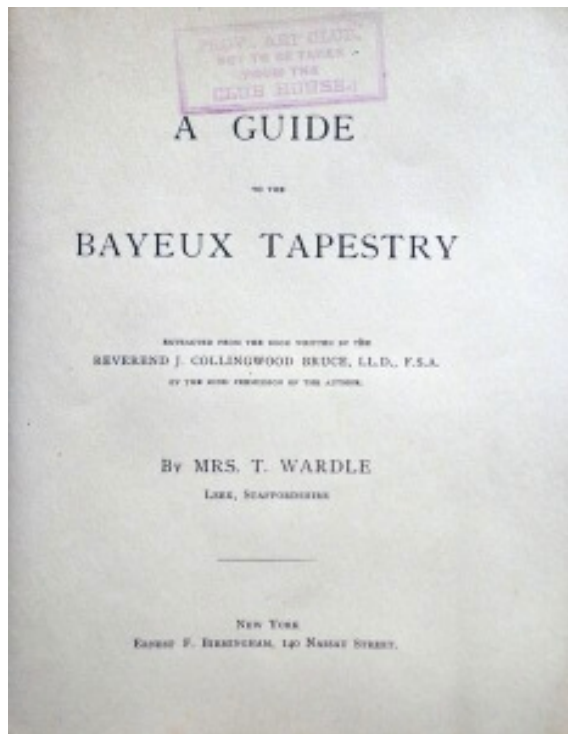
[PAGE 1]

A Guide to The Bayeux Tapestry

REPRODUCED BY THE LEEK EMBROIDERY SOCIETY ENGLAND

1887, 3/8, Fac-Simile of Bayeux Tapestry

Box 2, 1880-1889



1887, 3/8, Fac-Simile of Bayeux Tapestry

[PAGE 2]

A GUIDE TO THE BAYEUX TAPESTRY

Extracted from the book written by the REVEREND J. COLLINGWOOD BRUCE, L.L.D, F.S.A

By the kind permission of the author.

By MRS. T. WARDLE

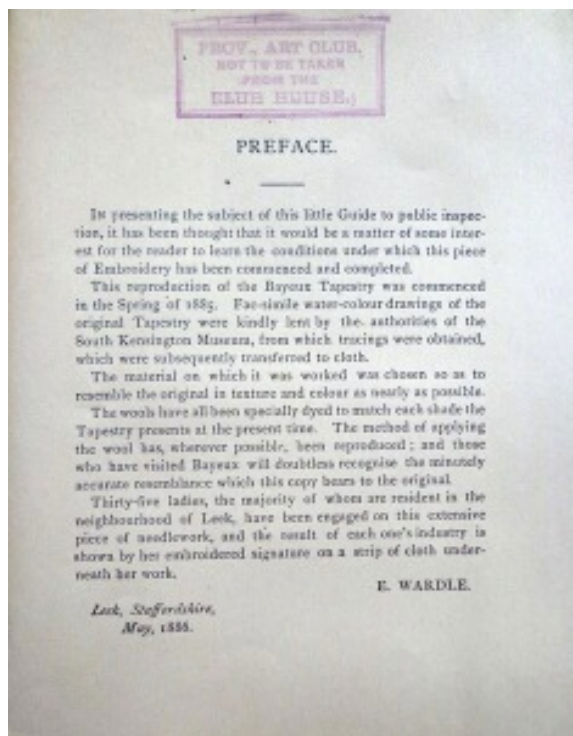
Leek, Staffordshire

New York

Ernest F. Birmingham, 140 Nassau Street.

1887, 3/8, Fac-Simile of Bayeux Tapestry

Box 2, 1880-1889



1887, 3/8, Fac-Simile of Bayeux Tapestry

[PAGE 3]

PREFACE.

In presenting the subject of the little Guide to public inspection, it has been thought that it would be a matter of some interest for the reader to learn the conditions under which this piece of Embroidery has been commenced and completed.

This reproduction of the Bayeux Tapestry was commenced in the Spring of 1885. Fac-simile water-colour drawings of the original Tapestry were kindly lent by the authorities of the South Kensington Museum, from which tracings were obtained, which were subsequently transferred to cloth.

The material on which it has worked was chosen so as to resemble the original in texture and colour as nearly as possible.

The wools have been specially dyed to match each shade the Tapestry presents at the present time. The method of applying the wool has, wherever possibly, been reproduced; and those who have visited Bayeux will doubtless recognize the minutely accurate resemblance which this copy bears to the original.

Thirty-five ladies, the majority of whom are resident in the neighbourhood of Leek, have been engaged on this extensive piece of needlework, and the result of each one's industry is shown by her embroidered signature on a strip of cloth underneath her work.

E. WARDLE

Leek, Staffordshire,

May 1886