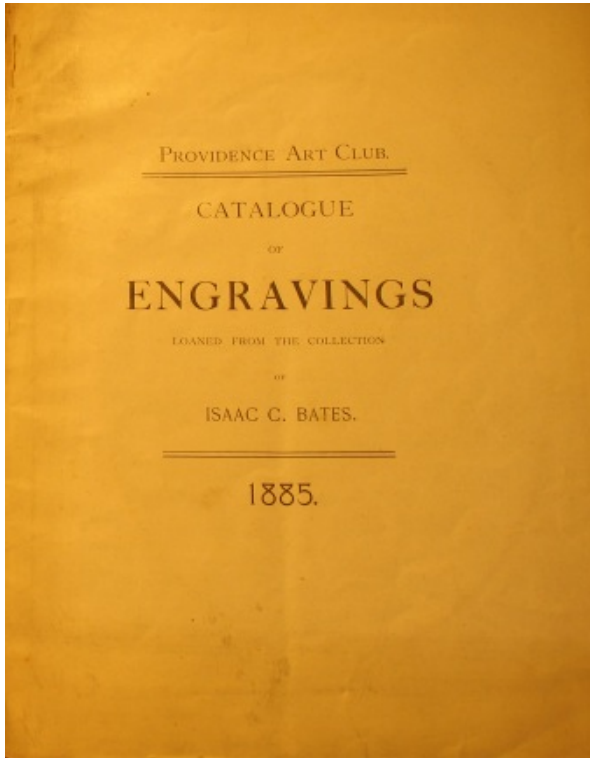


Catalogue of Engravings 1885

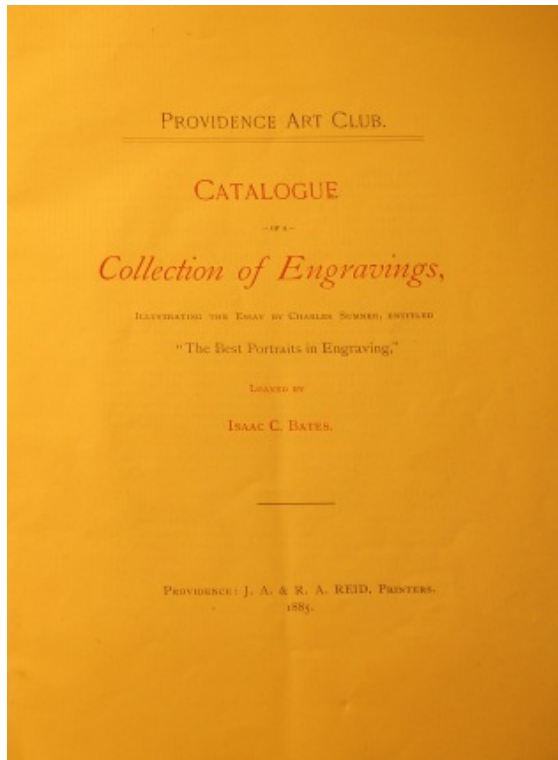
Box 1 - Miscellaneous Catalogues and Books 1880-1920



[COVER}

Catalogue of Engravings 1885

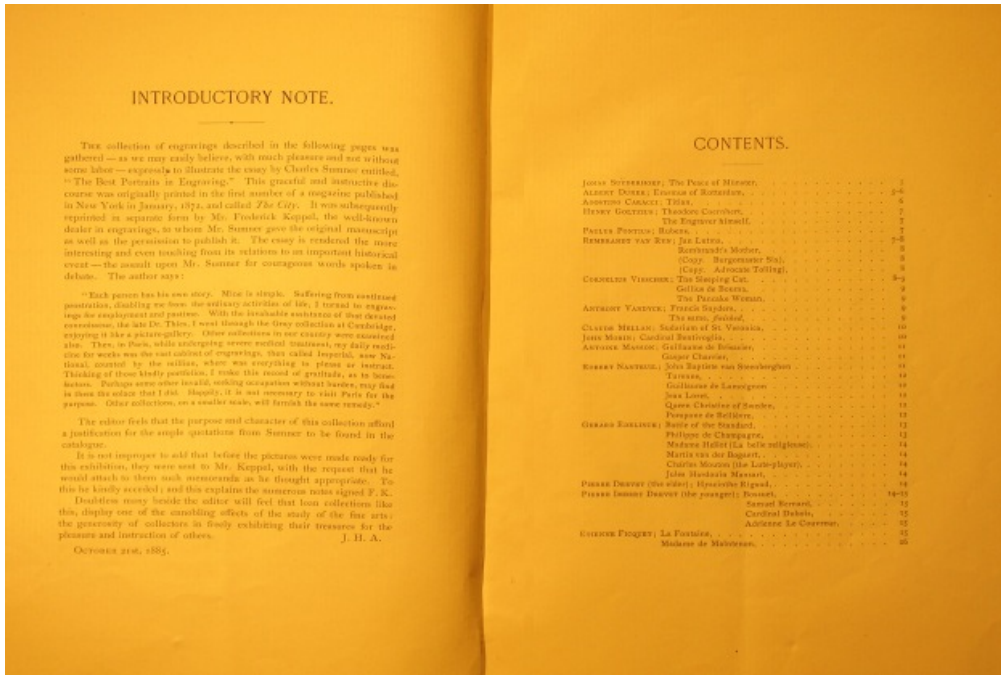
Box 1 - Miscellaneous Catalogues and Books 1880-1920



[TITLE PAGE]

Catalogue of Engravings 1885

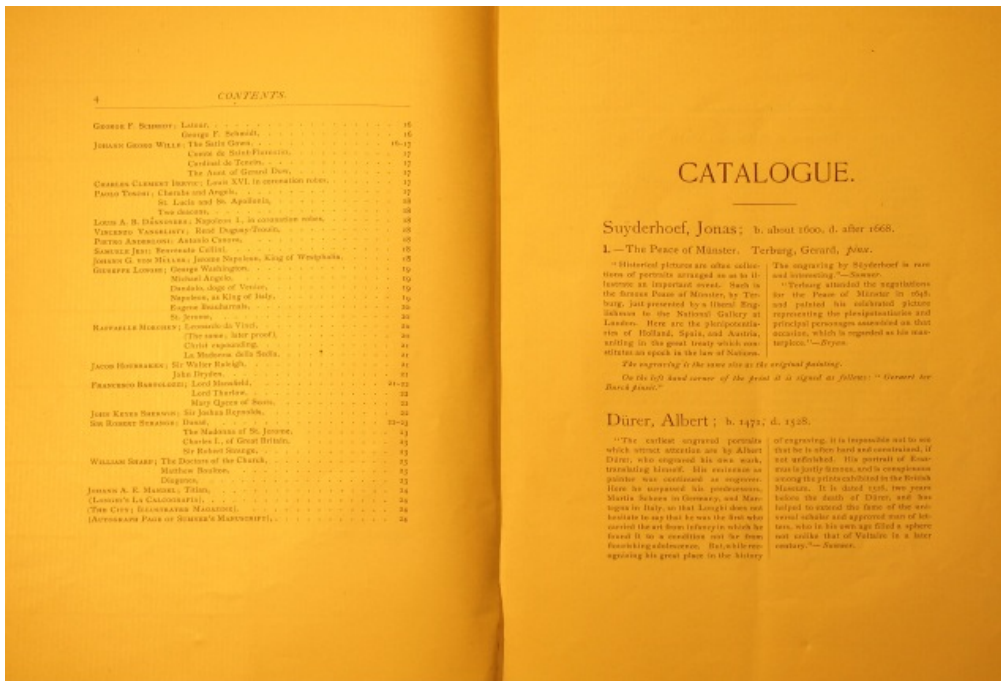
Box 1 - Miscellaneous Catalogues and Books 1880-1920



[PAGES 2 &3] Introductory note; Table of Contents

Catalogue of Engravings 1885

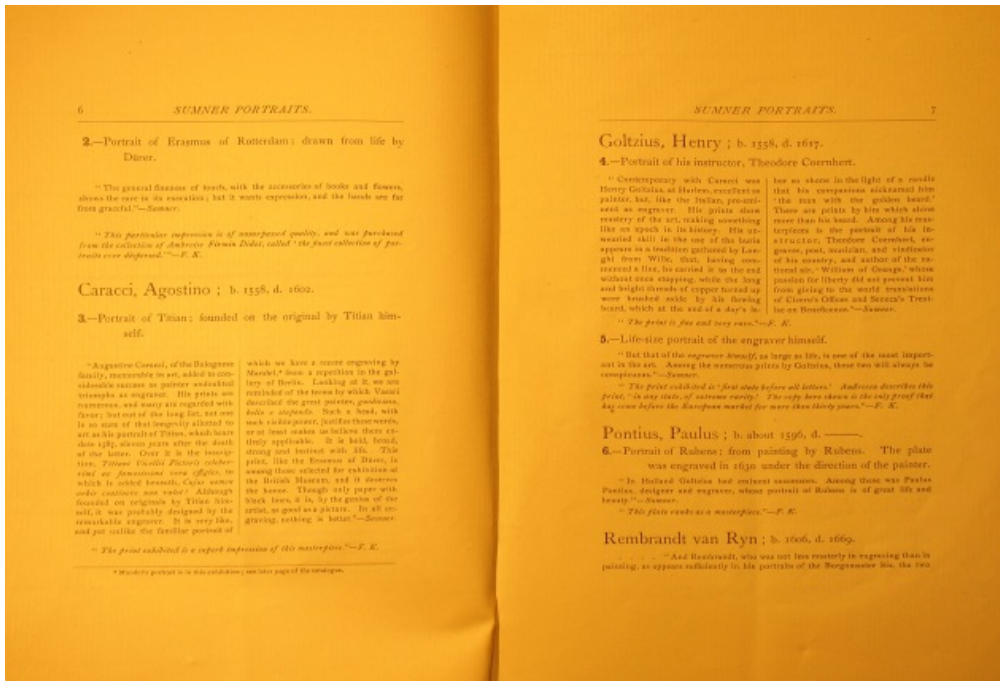
Box 1 - Miscellaneous Catalogues and Books 1880-1920



[PAGES 4 & 5] Table of Contents; JONAS SUYDERHOEF - The Peace of Munster (1); ALBERT DURER (cont. on next page)

Catalogue of Engravings 1885

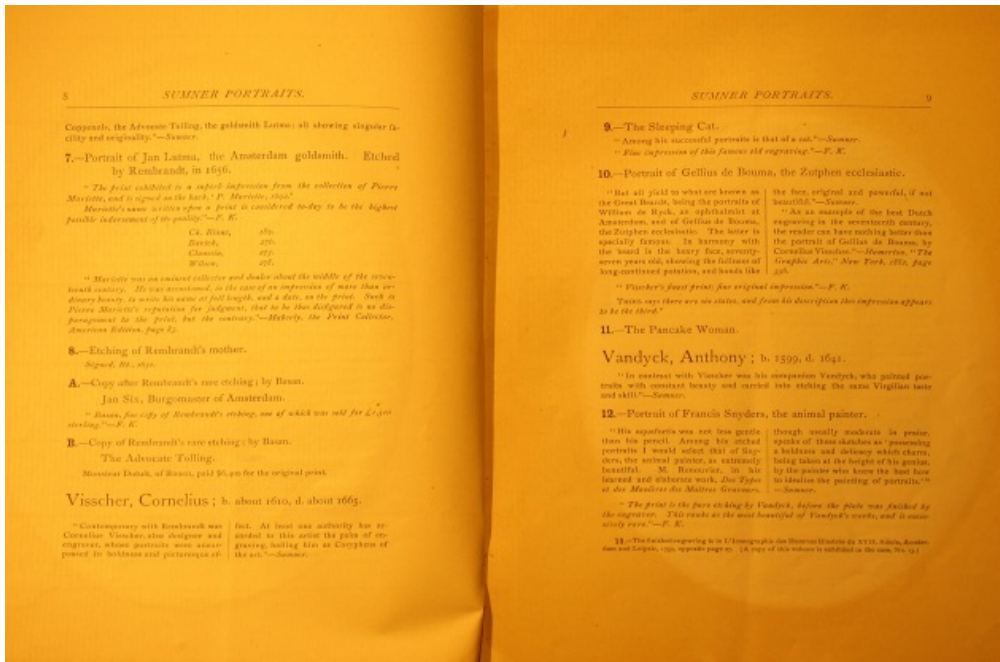
Box 1 - Miscellaneous Catalogues and Books 1880-1920



[PAGES 6 & 7] ALBERT DURER - Portrait of Erasmus of Rotterdam; drawn from life by Durer (2); AGOSTINO CARACCI - Portrait of Titian; founded on the original by Titian himself (3); HENRY GOLTZIUS - Portrait of his instructor, Theodore Coernhert (4), Life-size portrait of the engraver himself (5); PAULUS PONTIUS - Portrait of Rubens; from painting by Rubens (6); REMBRANDT VAN RYN

Catalogue of Engravings 1885

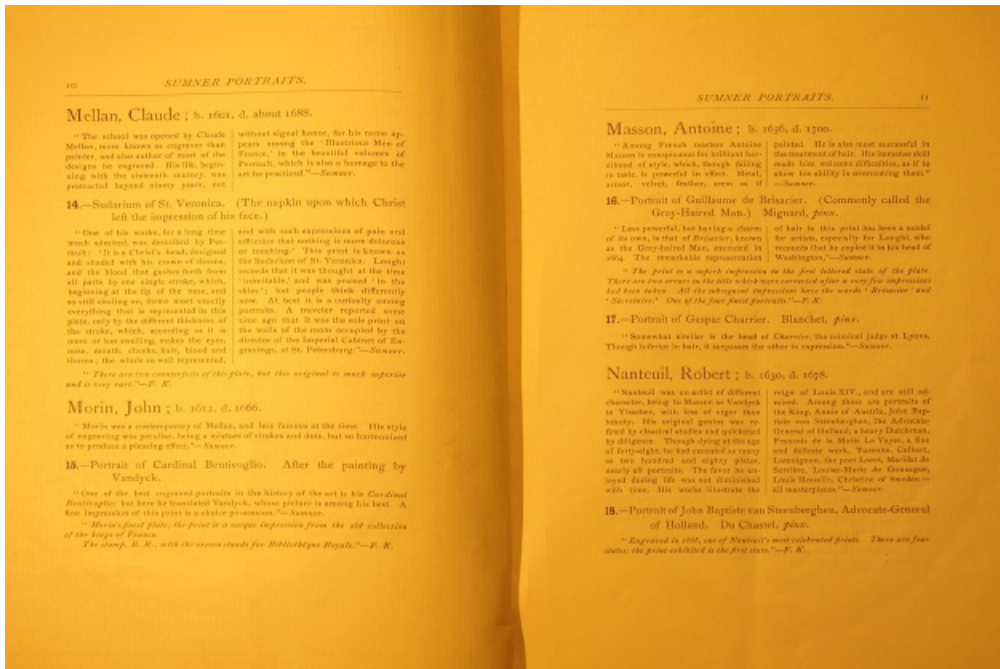
Box 1 - Miscellaneous Catalogues and Books 1880-1920



[PAGES 8 & 9] REMBRANDT VAN RYN - Portrait of Jan Lutma, the Amsterdam goldsmith. Etched by Rembrandt, in 1656 (7); Etching of Rembrandt's mother (8); Copy after Rembrandt's rare etching; by Basan. Jan Six, Burgomaster of Amsterdam (A); Copy of Rembrandt's rare etching; by Basan. The Advocate Tolling. (B); CORNELIUS VISSCHER - The Sleeping Cat (9); Portrait of Gellius de Bouma, the Zutphen ecclesiastic (10); The Pancake Woman (11); ANTHONY VANDYCK - Portrait of Francis Snyders, the animal painter. (12); Copy of volume (13);

Catalogue of Engravings 1885

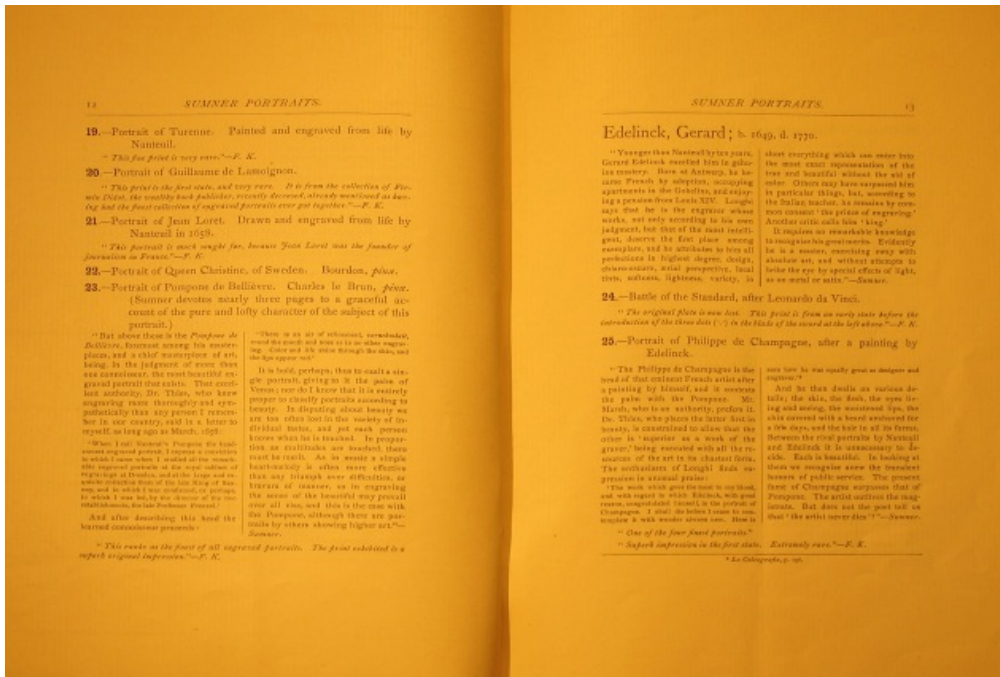
Box 1 - Miscellaneous Catalogues and Books 1880-1920



[PAGES 10 & 11] CLAUDE MELLAN - Sudarium of St. Veronica. (The napkin upon which Christ left the impression of his face.) (14); JOHN MORIN - Portrait of cardinal Bentivoglio. After the painting by Vandyck. (15); ANTOINE MASSON - Portrait of Guillaume de Brisacier (Commonly called the Gray-Haired Man.) Mignard, pinx. (16); Portrait of Gaspar Charrier. Blanchet, pinx. (17); ROBERT NANTEUIL - Portrait of John Baptiste van Steenberghe, Advocate-General of Holland. Du Chastel, pinx. (18);

Catalogue of Engravings 1885

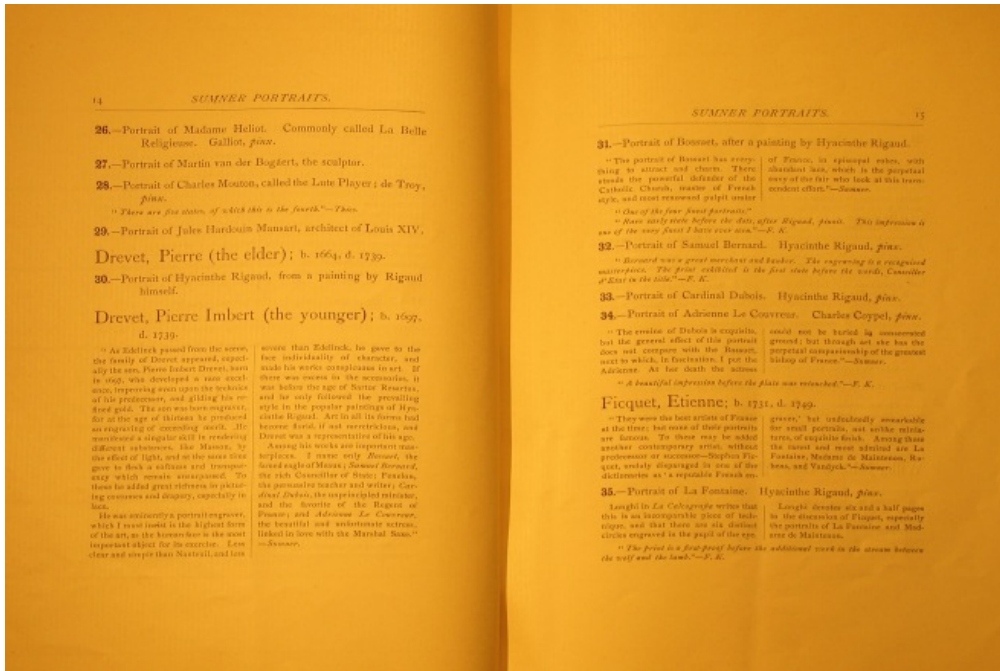
Box 1 - Miscellaneous Catalogues and Books 1880-1920



[PAGES 12 & 13] ROBERT NANTEUIL - Portrait of Turenne. Painted and engraved from life by Nanteuil (19); Portrait of Guillaume de Lamoignon (20); Portrait of Jean Loret. Drawn and engraved from life by Nanteuil in 1658 (21); Portrait of Queen Christine, of Sweden. Bourdon, pinx. (22); Portrait of Pompone de Bellievre. Charles le Brun, pinx. (23); GERARD EDELINCK - Battle of the Standard, after Leonardo da Vinci (24); Portrait of Philippe de Champagne, after a painting by Edelinck (25)

Catalogue of Engravings 1885

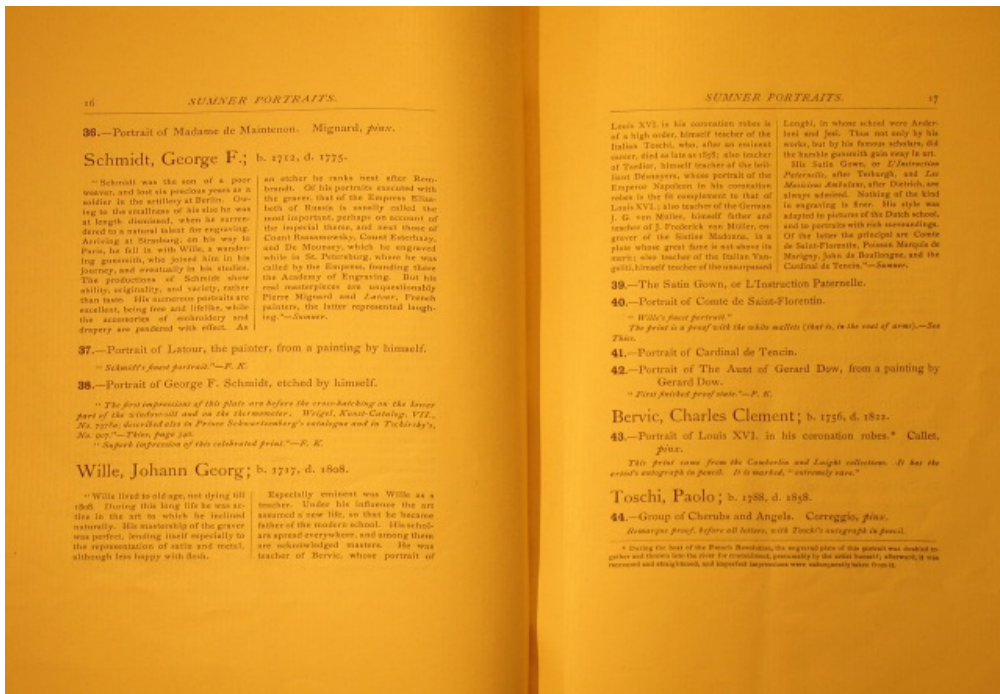
Box 1 - Miscellaneous Catalogues and Books 1880-1920



[PAGES 14 & 15] GERARD EDELINCK - Portrait of Madame Heliot. Commonly called La Belle Religieuse. Galliot, pinx. (26); Portrait of Martin van der Bogaert, the sculptor. (27); Portrait of Charles Mouton, called the Lute Player; de Troy, pinx. (28); Portrait of Jules Hardouin Mansart, architect of Louis XIV, Drevet, Pierre (the elder) - Portrait of Hyacinthe Rigaud, from a painting by Rigaud himself (30); PIERRE IMBERT DREVET (the younger) - Portrait of Bossuet, after a painting by Hyacinthe Rigaud (31); Portrait of Samuel Bernard. Hyacinthe Rigaud, pinx. (32); Portrait of Cardinal Dubois. Hyacinthe Rigaud, pinx. (33); Portrait of Adrienne Le Couvreur. Charles Coypel, pinx. (34); ETIENNE FICQUET - Portrait of La Fontaine. Hyacinthe Rigaud, pinx. (35);

Catalogue of Engravings 1885

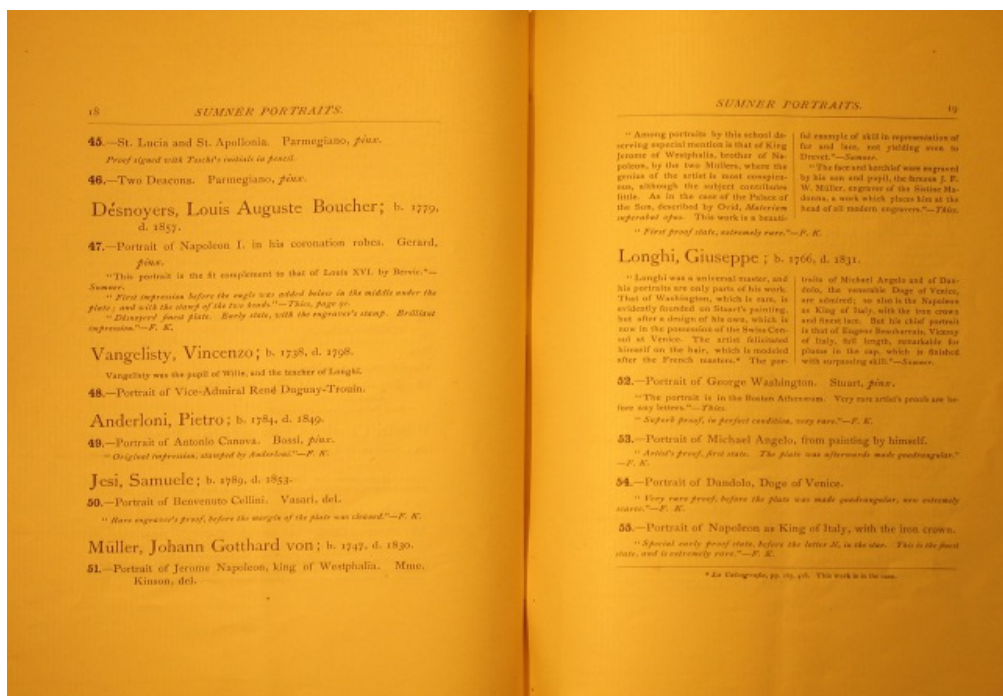
Box 1 - Miscellaneous Catalogues and Books 1880-1920



[PAGES 16 & 17] ETIENNE FICQUET- Portrait of Madame de Maintenon. Mignard, pinx. (36); GEORGE F. SCHMIDT - Portrait of Latour, the painter, from a painting by himself. (37); Portrait of George F. Schmidt, etched by himself (38); JOHANN GEORG WILLE - The Satin Gown, or L'Instruction Paternelle (39); Portrait of Comte de Saint-Florentin (40); Portrait of Cardinal de Tencin (41); Portrait of The Aunt of Gerard Dow, from a painting by Gerard Dow (42); CHARLES CLEMENT BERVIC - Portrait of Louis XVI, in his coronation robes. Callet, pinx. (43); PAOLO TOSCHI - Group of Cherubs and Angels. Correggio, pinx. (44)

Catalogue of Engravings 1885

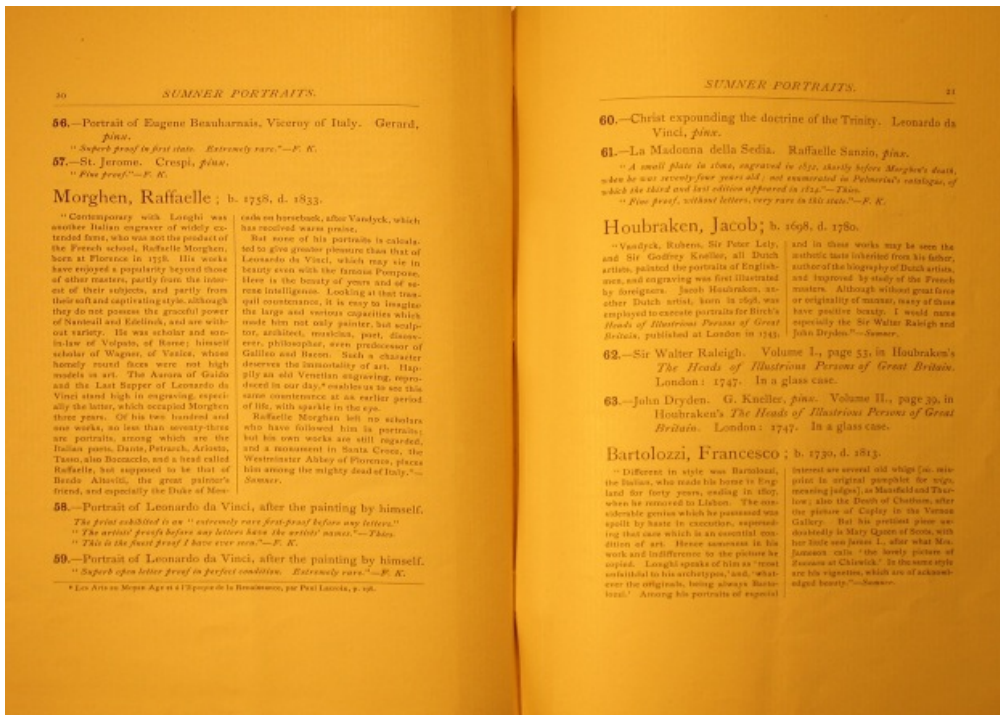
Box 1 - Miscellaneous Catalogues and Books 1880-1920



[PAGES 18 & 19] PAOLO TOSCHI - St. Lucia and St. Apollonia. Parmegiano, pinx. (45); Two Deacons. Parmegiano, pinx. (46). LOUIS AUGUSTE BOUCHER DESNOYERS - Portrait of Napoleon I, in his coronation robes. Gerard, pinx. (47); VINCENZO VANGELISTY - Portrait of Vice-Admiral Rene Duguay-Trouin (48); PIETRO ANDERLONI - Portrait of Antonio Canova. Bossi, pinx. (49); SAMUELE JESI - Portrait of Benvenuto Cellini. Vasari, del. (50); JOHANN GOTTHARD VON MULLER - Portrait of Jerome Napoleon, king of Westphalia. Mme. Kinson, del. (51); GIUSEPPE LONGHI - Portrait of George Washington. Stuart, pinx. (52); Portrait of Michael Angelo, from painting by himself (53); Portrait of Dandolo, Doge of Venice (54); Portrait of Napoleon as King of Italy, with the iron crown (55);

Catalogue of Engravings 1885

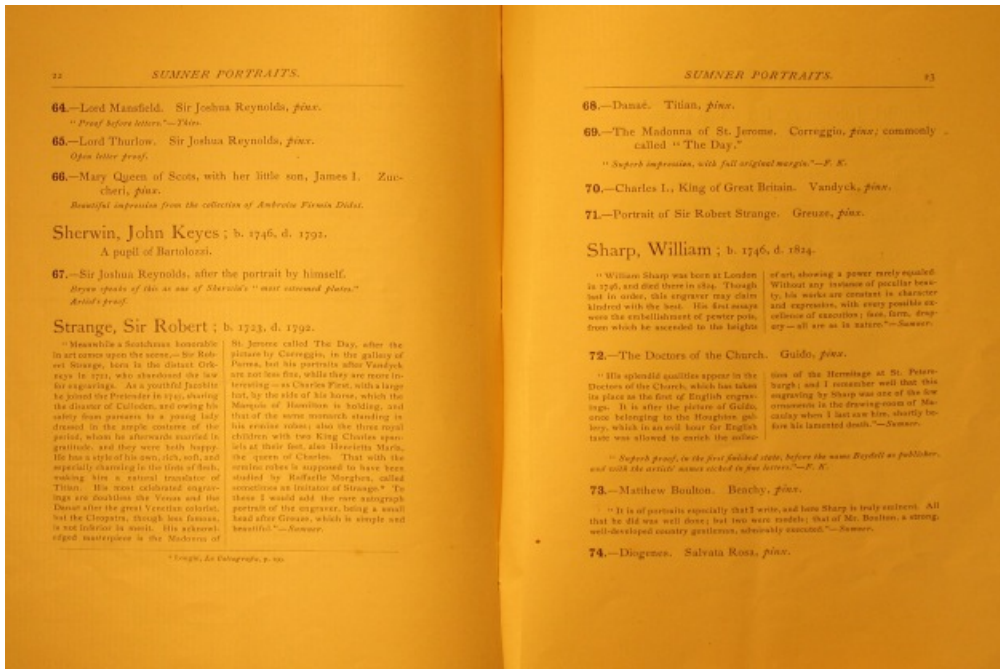
Box 1 - Miscellaneous Catalogues and Books 1880-1920



[PAGES 20 & 21] GIUSEPPE LONGHI - Portrait of Eugene Beauharnais, Viceroy of Italy. Gerard, pinx. (56); St. Jerome. Crespi, pinx. (57); RAFFAELLE MORGHEN - Portrait of Leonardo da Vinci, after the painting by himself (58); Portrait of Leonardo da Vinci, after the painting by himself (59); Christ expounding the doctrines of the Trinity. Leonardo da Vinci, pinx. (60); La Madonna della Sedia. Raffaelle Sanzio, pinx. (61); JACOB HOUBRAKEN - Sir Walter Raleigh (62); John Dryden (63); FRANCESCO BARTOLOZZI

Catalogue of Engravings 1885

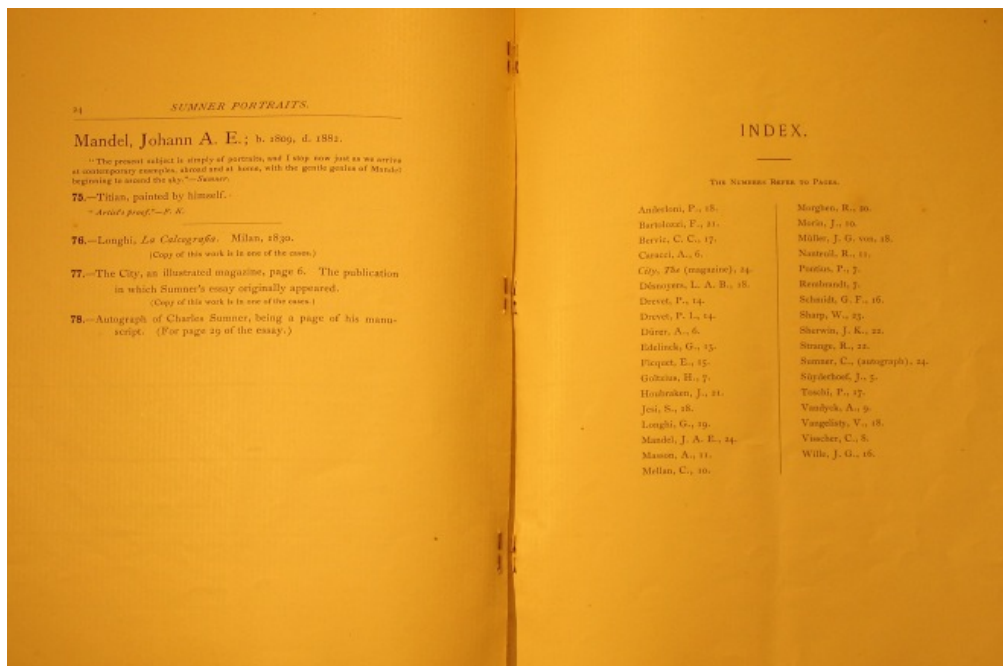
Box 1 - Miscellaneous Catalogues and Books 1880-1920



[PAGES 22 & 23] FRANCESCO BARTOLOZZI - Lord Mansfield. Sir Joshua Reynolds, pinx. (64); Lord Thurlow. Sir Joshua Reynolds, pinx. (65); Mary Queen of Scots, with her little son, James I. Zuccheri, pinx. (66); JOHN KEYES SHERWIN - Sir Joshua Reynolds, after the portrait by himself (67); SIR ROBERT STRANGE - Danae. Titian, pinx. (68); The Madonna of St. Jerome. Correggio, pinx; commonly called "The Day." (69); Charles I., King of Great Britain. Vandyck, pinx. (70); Portrait of Sir Robert Strange. Greuze, pinx. (71); WILLIAM SHARP - The Doctors of the Church. Guido, pinx (72); Matthew Boulton. Beachy, pinx. (73); Diogenes. Salvata Rosa, pinx. (74)

Catalogue of Engravings 1885

Box 1 - Miscellaneous Catalogues and Books 1880-1920



[PAGES 24 & INDEX] JOHANN A. E. MANDEL - Titian, painted by himself. (75); Longhi, *La Calcografia* (76); *The City*, an illustrated magazine, page 6. The publication in which Sumner's essay originally appeared. (77); Autograph of Charles Sumner, being a page of his manuscript. (78); Index